

[Guildford Dragon NEWS | The Guildford Dragon \(guildford-dragon.com\)](http://guildford-dragon.com)

[Guildford Dragon NEWS | The Guildford Dragon \(guildford-dragon.com\)](http://guildford-dragon.com)

Back To The 1950s With Some Lovely Vintage Photos

By David Rose

Here are some wonderful photographs taken in and around Guildford in the 1950s. They were taken by Ted (William Edward) Jauncey, who once worked at the electrical engineering firm Nelco at Shalford. He was a draughtsman (jig and tool designer).

Some of his photos have previously been featured in my ongoing story about Nelco. [Click here to read.](#)

Mr Jauncey was a member of the Guildford Photographic Club and was heavily involved in Scouts, leading the Shere and Peaslake troop for many years.

He died in in 1983, aged 62, and his son, Kim, has recently been digitally copying his father's photos and has kindly allowed these to be published here.

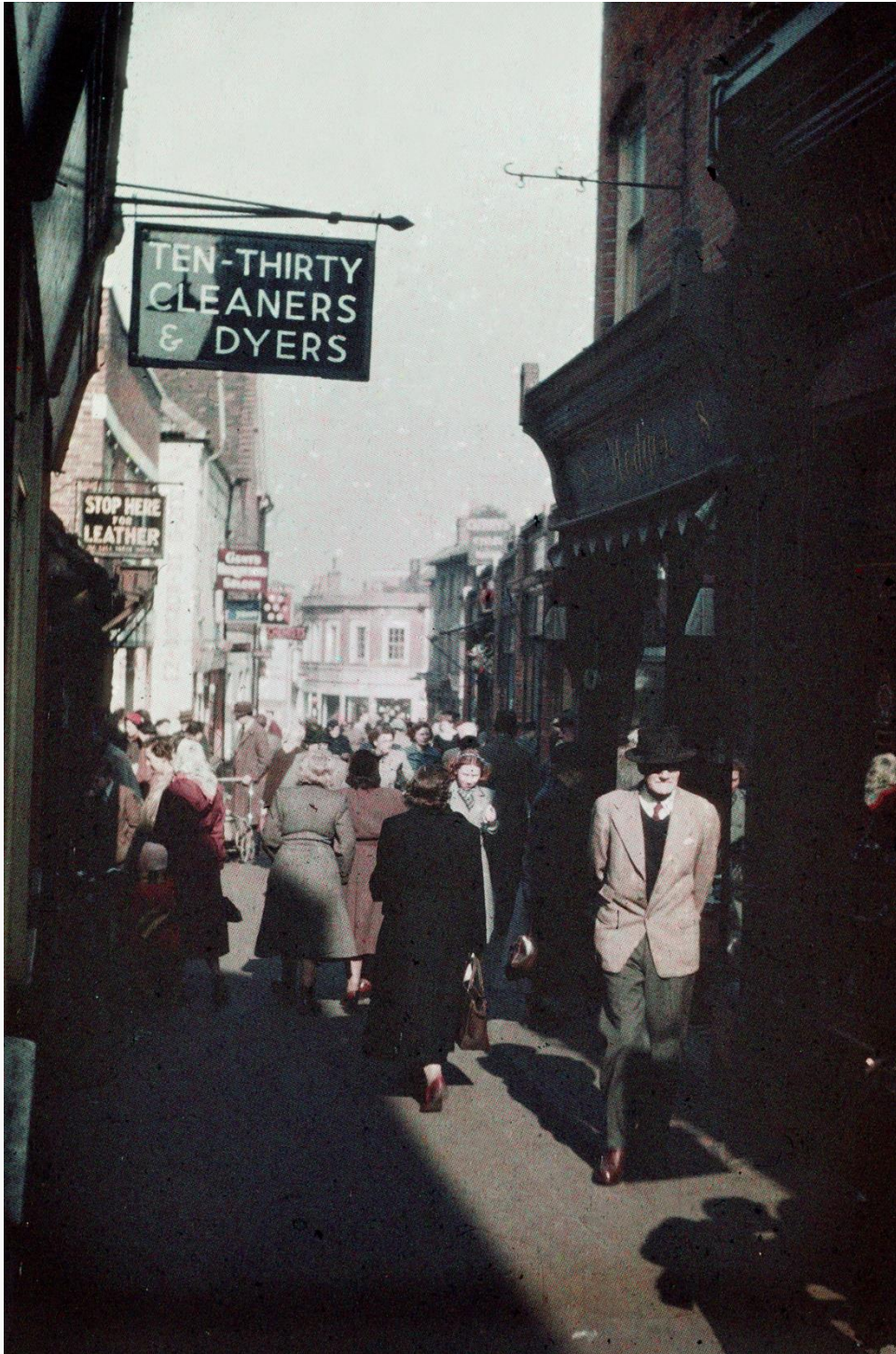


A view over Guildford town centre towards the Castle Keep, taken in 1958 from the roof garden of Harvey's store. Click on all images to enlarge in a new window. Picture courtesy of Kim Jauncey.



And a view from the same location looking in the other direction with the steeple of Guildford Methodist Church in the foreground and the then unfinished Guildford Cathedral on the horizon. The two chimneys of the Guildford Park Brickworks can also be seen as well as the chimney of the Friary Meux brewery, to the right.

Picture courtesy of Kim Jauncey.



Swan Lane pictured in 1952, note the sign for the Ten-Thirty Cleaners & Dyers. Picture courtesy of Kim Jauncey.



Two photos of the fruit, vegetable and flower market in North Street, taken in 1952. Picture courtesy of Kim Jauncey.



This photo gives a better view looking down Ward Street to the Surrey Advertiser building in Martyr Road. Picture courtesy of Kim Jauncey.



Dating to 1951, this photo, taken from the Hog's Back, looks over Onslow Village in the foreground. Note the telegraph poles and wires. Picture courtesy of Kim Jauncey.



Moving on to Shalford with a series of photos. This one, taken in 1951, features the cottages opposite the Seahorse pub. Picture courtesy of Kim Jauncey.



A misty dawn on the common at Shalford from 1956. Picture courtesy of Kim Jauncey.



A view of the A248 Kings Road, Shalford, from 1951. Between the cottages on the right, the roofs of the Nelco factory in Station Road can be seen. Picture courtesy of Kim Jauncey.



A rainbow Over Shalford in 1951. Picture courtesy of Kim Jauncey.



Looking along the A248 towards Chilworth and Wonersh in 1951. Picture courtesy of Kim Jauncey.



A cottage on the common at Shalford (east side) in 1951. The Chantries are in the background. Picture courtesy of Kim Jauncey.



Elm trees on the common at Shalford in 1951. Picture courtesy of Kim Jauncey.



A gymkhana event in Shalford Park in 1959. Picture courtesy of Kim Jauncey.



Pictured in 1950, the Silent Pool near Albury. Picture courtesy of Kim Jauncey.



Cottages in Albury with their characteristic 'Pugin' chimneys. The photo dates to 1952. Note the post office with its red wall letterbox and advertising sign for Players cigarettes. Picture courtesy of Kim Jauncey.



Dorking from the Nower in 1950. In the background is the North Downs. Picture courtesy of Kim Jauncey.



Dorking town centre in 1956. Picture courtesy of Kim Jauncey.



High Street Dorking in 1952. Picture courtesy of Kim Jauncey.



A view from Holmbury Hill, 1952. Picture courtesy of Kim Jauncey.

Share this:

- [Reddit](#)
- [Print](#)
- [Facebook](#)

- [Twitter](#)
-

Share This Post



Leave a Reply

Your email address will not be published. Required fields are marked *

Comment

Name *

Email *

Website



See Dragon story: Surrey 'Taken for Granted' as Government Ignores County in Levelling Up Proposals

CKD

CLASSICKITCHENSDIRECT

Kitchens that make being stuck
at home Bearable!



Handmade in the UK

TIME

Watch Repair

New in Quarry Street,
Guildford

FREE ESTIMATES

Battery replacements, services,
strap replacements,
bracelet adjustments

Drop in or

Call 01483 577047 or

07391 503039

www.timewatchrepair.co.uk

COCCO

New Café & Patisserie

Haydon Place opposite Waitrose
01483 323577

Best Cakes and coffee
in Guildford

COCCO

LIONGATE HOUSE
GUILDFORD



1 and 2 Bedroom
Luxury Apartments
For Sale from £229,500



Penthouses available



High Specification

25%
NOW
RESERVED!

Show Apartments Now Open

Contact us now to arrange an appointment - Open 7 days a week

- Walking Distance to the University of Surrey
- Covered Parking
- EV Charging Points
- Incentives Available
- 6% investment yield

liongatehouse.co.uk

01483 956983
liongatehouse@elevationnewhomes.com
www.liongatehouse.co.uk

elevation
new homes | est. 1992

Angela RICHARDSON MP



**Working hard for Guildford,
Cranleigh and Our Villages**

**Please get in touch if I can
help you. For surgeries,
contact:**

☎ **0207 219 5851**
@ **angela.richardson.mp@parliament.uk**



The **Guildford Dragon**
NEWS established 2012

Your popular, reader-friendly
Dragon had over
1.3 million page views
last year

That's around 3,600 a day, or about
25,000 views our readers call up
every single week

Your **£35-a-week advert** is a
bargain you shouldn't miss

Contact **advertsdragon@gmail.com**
or call **0775 232 5557**

Free valuations by email:
valuations@ewbankauctions.co.uk



Ewbank's
Surrey's Premier Auctioneers & Valuers



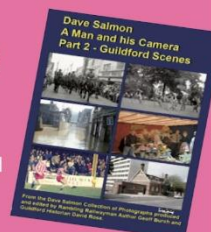
Fine Wines & Spirits: 17 December
Antique & Collectors': 22 December
Trading Cards Auction: 4 January
Antique & Collectors': 12 January
Vintage Posters: 21 January

ewbankauctions.co.uk
01483 223101
antiques@ewbankauctions.co.uk

**LOOK! Hundreds of photos of
Guildford as it used to be**

**Dave Salmon – A Man
and his Camera Part 2
Guildford Scenes
double DVD set**

Compiled by Geoff Burch and David
Rose – £10 order online from
ramblingrailwayman.co.uk



Recent Articles

- [Headteacher Wants Apology for Jimmy Carr's Joke About Gypsies in Holocaust](#)
- [Will Guildford Be Part of a Lib Dem & Labour Non-aggression Pact?](#)
- [Letter: An Improved Infrastructure of Roads Is the Answer. Not Road Charging](#)
- [GBC Recommends New Town Centre Council Ward Be Called 'Castle Ward'](#)
- [Wanborough Fields a 'Right Fit' for Travellers, Says Owner](#)

- [Please Don't Travel Says South West Railways](#)
- [Letter: Old Style Politics Have Served Guildford Poorly](#)
- [Storm Franklin Takes Over from Eunice as Weather Warnings and Power Cuts Continue](#)
- [Wisley Walkers Protest Against Development Plans](#)
- [Letter: Cyclists Not Wearing Helmets Is Not Our Biggest Problem](#)



Regulated by IMPRESS:
The Independent Monitor
for the Press CIC
IMPRESS, 16-18 New Bridge Street,
London, EC4V 6AG
T 020 3325 4288
E complaints@impress.press
W impress.press

The Guildford Dragon NEWS
is a member of the

independent community news network

Recent Comments

- Paul Hart on [Wanborough Fields a 'Right Fit' for Travellers, Says Owner](#)
- Christopher Campbell on [Wisley Walkers Protest Against Development Plans](#)
- Alistair Smith on [Opinion: Charge Cars Using Guildford Roads To Beat Congestion And Pollution](#)
- Kate Hounson on [Wisley Walkers Protest Against Development Plans](#)
- Michael Aaronson on [Wanborough Fields a 'Right Fit' for Travellers, Says Owner](#)
- Martin Stringfellow on [Wisley Walkers Protest Against Development Plans](#)

Search in Site

Media Gallery

How Can Our Town Centre Businesses Recover? Watch the Shop Front Debate

Tumbling Bay Weir Repair – Pictorial Report

Escape From the Lockdown Blues With a Dragon Tour of the Castle Grounds' Reds!

More Revelations on St Catherine's Cave Expected Soon

Dragon Interview: Guildford's MP Thanks Residents For Supporting the Fight Against Covid-19

Dragon Interview: Weir Repair Will Take Two Years

Dragon Interview: Royal Surrey Chief Exec Says, 'We're Feeling the Stress But Are Coping'

Dragon Interview: GBC MD Says He Is So Proud of His Council Colleagues

Surrey's Chief Constable Talks to The Guildford Dragon NEWS

Dragon Interview: Luci Phipps of GuildfordYoga



The Guildford Dragon
NEWS: please click here
for our letters, comments
and complaints policies